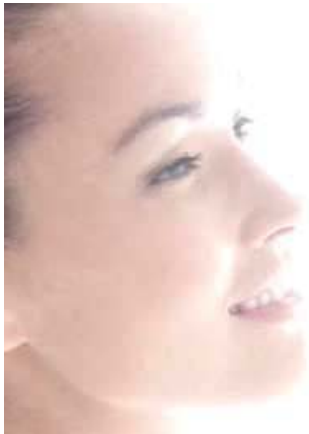


# Department Store Brands Pricing Comparative

## glimpse™

INTUITIVE SKIN CARE



### Glimpse Skin Care System I (Normal to Dry Skin)

- Step 1: Creamy Cleanser
- Step 2: Toner
- Step 3: Serum
- Step 4: Moisturizing Cream

Retail: \$200






### Glimpse Skin Care System II (Normal to Combination Skin)

- Step 1: Gel Cleanser
- Step 2: Toner
- Step 3: Serum
- Step 4: Moisturizing Lotion

Retail: \$200



	Cleanser, Toner, Serum and Moisturizer	Eye Cream and Night Cream	Total
<b>AVEDA</b>	<b>\$153</b>	<b>\$125</b>	<b>\$278</b>
<b>CLINIQUE</b> Allergy Tested. 100% Fragrance Free.	<b>\$164</b>	<b>\$119</b>	<b>\$283</b>
 Elizabeth Arden	<b>\$237</b>	<b>\$170</b>	<b>\$407</b>
<b>ESTÉE LAUDER</b>	<b>\$369</b>	<b>\$145</b>	<b>\$514</b>
 <b>GUERLAIN</b> PARIS	<b>\$372</b>	<b>\$188</b>	<b>\$560</b>
 <b>Kiehl's</b> SINCE 1851	<b>\$157</b>	<b>\$36*</b>	<b>\$193</b>
<b>LANCÔME</b> PARIS	<b>\$404</b>	<b>\$282</b>	<b>\$686</b>
 ROC	<b>\$190</b>	<b>\$113</b>	<b>\$303</b>
<b>SHISEIDO</b>	<b>\$197</b>	<b>\$146</b>	<b>\$343</b>

\*Night Cream Not Offered